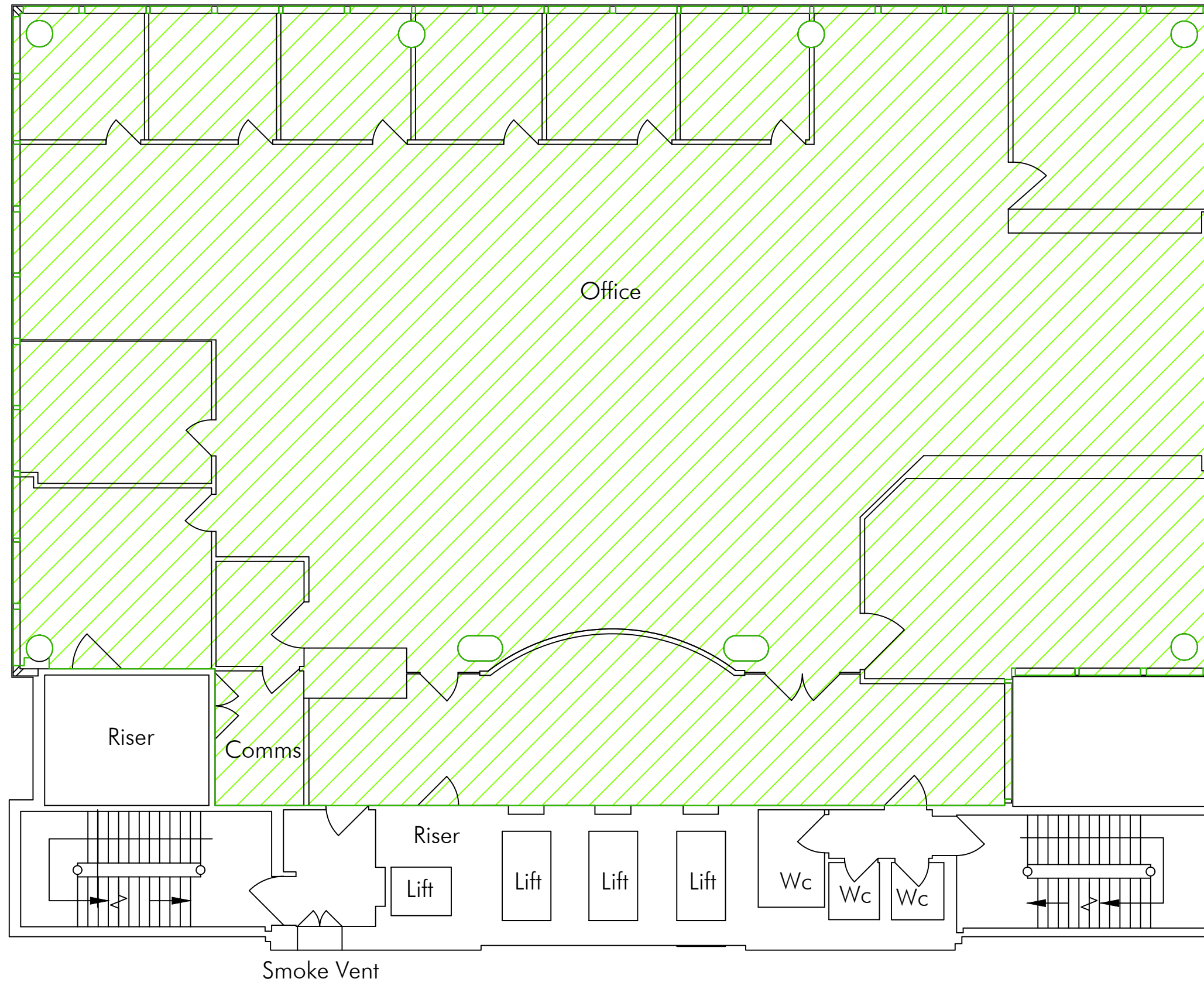



NOTES

This drawing complies with the 6th edition of the RICS code and is produced to an accuracy commensurate with standard presentation scales. It is held in a scaled digital CAD format.



 **OFFICE** 458.2 sq m 4932 sq ft

TOTAL NIA: 458.2 sq m 4932 sq ft



CBRE Limited, St Martins Court, 10 Paternoster Row,
London, EC4M 7HP
Switchboard: 0207 182 2000 Fax: 0207 182 3007
Web: www.cbre.com

Address:	Vitro,60 Fenchurch Street
	London
	EC3M 4AD
Drawing:	Internal Area Plan - NIA
Date:	11/05/2017
Scale:	1:100@A3
Drawn:	AT
Dwg. No.	0207003-1039-08-NIA
Project No.	0207003
Alt. Scale:	1:50@A1
Checked:	AG
Rev.	A